



# MONTHLY MEMBERSHIP PROGRESS REPORT

District 33 S

Results as of: 11/30/2018

GMT: MAHESH CHITNIS

LOCATION MASSACHUSETTS

GMT CA

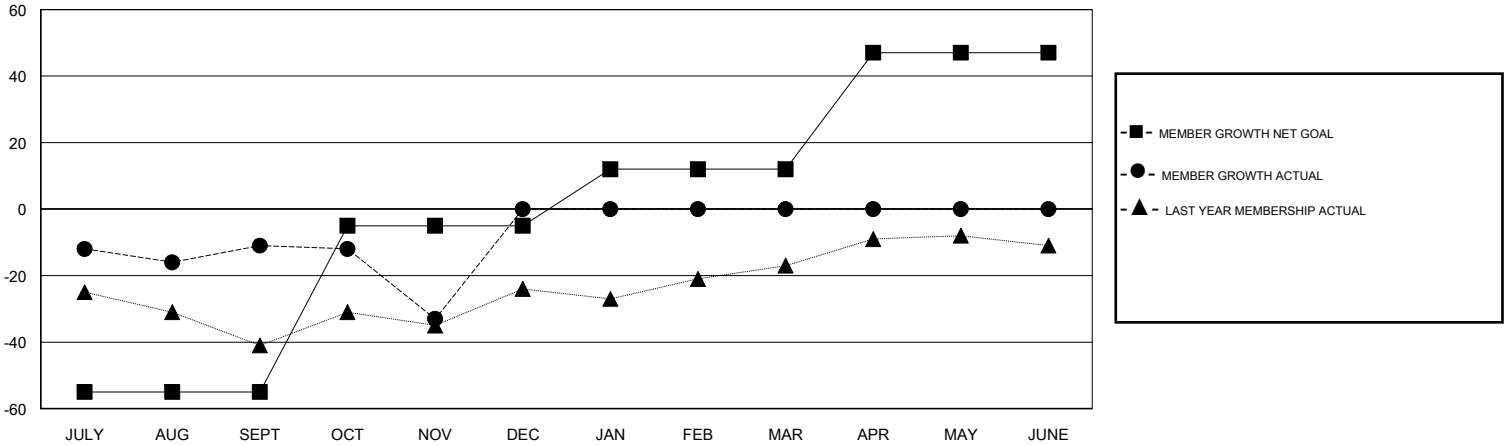
Clubs			
RESULTS FOR 2018-2019			
QUARTER	NEW CLUB GOAL	NEW CLUBS	DROPPED CLUBS
JULY/AUG/SEPT	0	0	0
OCT/NOV/DEC	0	0	0
JAN/FEB/MAR	1	0	0
APR/MAY/JUNE	0	0	0

Members			
RESULTS FOR 2018-2019			
QUARTER	MEMBER GROWTH NET GOAL	MEMBER GROWTH ACTUAL	DROPPED MEMBERS ACTUAL (including transfers)
JULY/AUG/SEPT	-55	31	39
OCT/NOV/DEC	50	21	41
JAN/FEB/MAR	17	0	0
APR/MAY/JUNE	35	0	0

GOALS AND ACTUAL NEW CLUBS CUMULATIVE



GOALS AND ACTUAL MEMBERS CUMULATIVE



DROPPED CLUBS: 0
------------------

18 CLUBS OF 48 ADDED 1 OR MORE NEW MEMBERS

GENDER DISTRIBUTION	
MALE	1,106 (65.14%)
FEMALE	592 (34.86%)
Women Percentage Fiscal Year Goal: 40%	

DROPPED MEMBERS	
DECEASED	12
CLUB CANCELLED	0
OTHER	68
<b>TOTAL</b>	<b>80</b>

[CLICK HERE FOR CUMULATIVE MEMBERSHIP DATA](#)

TOTAL FAMILY UNIT MEMBERS	232
FAMILY MEMBERS PAYING HALF DUES	119